

ITEM	QTY.	DESCRIPTION
1	1	MOTOR - 1750 RPM, INDUSTRIAL DUTY, HP PER ORDER, PAINTED FINISH
2	1	GEARBOX - 350 RPM, 5:1 REDUCTION, SYNTHETIC LUBE, PAINTED FINISH
3	1	BEARING HOUSING - ALUMINUM, WITH HOLLOW BORE COUPLING, PAINTED FINISH
4	1	STAINLESS CUP PLATE MOUNT - BALL AND SOCKET TYPE
5	1	SHAFT - 316 STAINLESS STEEL SHAFT PER ORDER
6	1+	IMPELLER - 316 STAINLESS HYDROFOIL IMPELLER, SIZE AND QTY PER ORDER

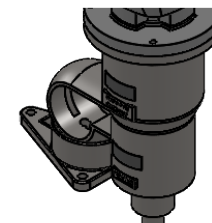
STANDARD FEATURES

- CAST ALUMINUM HOUSING
- DUAL OVERSIZE ABEC-RATED BEARINGS
- STAINLESS CUP PLATE MOUNT
- STAINLESS HOLLOW BORE COUPLING
- STAINLESS HARDWARE

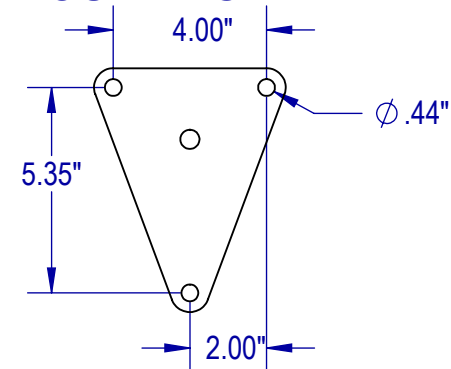
AVAILABLE UPGRADES

- 32 Ra SANITARY FINISH ON WETTED PARTS
- FILTER, LUBRICATOR REGULATOR (FLR) FOR AIR MOTORS
- EXPLOSION PROOF MOTOR FOR ELECTRIC MOTORS

BALL & SOCKET DETAIL



CUP PLATE MOUNTING DETAIL



AIR CONSUMPTION FOR AIR MOTORS

1 HP	40 CFM @ 80 PSI
2 HP	60 CFM @ 70 PSI
3 HP	90 CFM @ 70 PSI

NOTE: ALL STAINLESS VERSION IS AVAILABLE
STAINLESS STEEL VERSION INCLUDES: STAINLESS MOTOR, STAINLESS GEARBOX, STAINLESS HARDWARE, STAINLESS BEARING HOUSING (WITH VITON O-RING UPPER SEAL AND VITON LIP SEAL LOWER SEAL)

DRAWN	SB	DATE
CHECKED	DP	6/10/22

PROPRIETARY AND CONFIDENTIAL

THE INFORMATION CONTAINED IN THIS DRAWING IS THE SOLE PROPERTY OF FUSION FLUID EQUIPMENT LLC. ANY REPRODUCTION IN PART OR AS A WHOLE WITHOUT THE WRITTEN PERMISSION OF FUSION FLUID EQUIPMENT LLC IS PROHIBITED.

WHILE FUSION FLUID EQUIPMENT LLC STRIVES TO MAINTAIN THE INTEGRITY OF A DESIGN AS APPROVED, FUSION FLUID EQUIPMENT LLC RETAINS THE RIGHT TO MAKE MODIFICATIONS DURING THE MANUFACTURING PROCESS TO IMPROVE FIT, FORM, AND FUNCTION OF THE DESIGN WITHOUT CUSTOMER NOTIFICATION OR CONSENT.

UNLESS OTHERWISE SPECIFIED:
DIMENSIONS ARE IN INCHES.
NO TOLERANCE IS IMPLIED.
DO NOT SCALE DRAWING

FusionExpress
Fusion Fluid Equipment LLC

TITLE: FUSION PRO PG-U
GEAR DRIVE - CUP PLATE

SIZE	DWG. NO.	REV
A	SALES-PG-#U-#	B
SCALE: 1:16	WEIGHT:	SHEET 1 OF 1